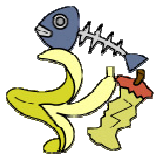


How to dispose and separate garbage in Yawatahama City

燃

Burnable garbage



kitchen garbage



Garbage of cloth and leather



wood and grass debris, paper waste



Use city-designated garbage bags

不

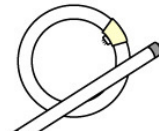
Non-burnable garbage



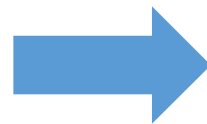
metal trash



pottery etc.



glass garbage



Use city-designated garbage bags

PET

Plastic bottle



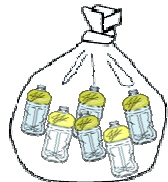
PET

Items with this mark

Wash it



The lid is a Container plastics and trays



Use transparent bags or containers

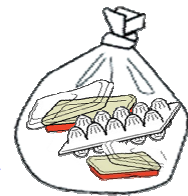
プラ

Container plastics and trays



Items with this mark

Wash it



Use transparent bags

△Please dispose of plastic bottles and Container plastics and trays in separate bags.

ビン Bottles



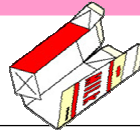
Use transparent bags or containers

カン Cans



Spray cans are used up, punctured and thrown away.

紙 Paper containers and packaging



Tie it with string or put it in a paper bag

Items that cannot be thrown away at garbage collection points

- Large items that don't fit in garbage bags (Bicycles, desks, sofas, futons, etc.) →Take it directly to the environmental center
9-40 Wakayama, Yawatahama City
TEL 0894-23-0053
- TV, air conditioner, refrigerator, washing machine →Consult your dealer
- Rechargeable batteries (lithium-ion etc.) →They are collected at city halls, etc.

ダン Cardboard



新 Newspaper



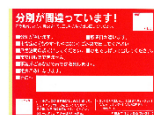
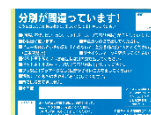
雑 Magazine



Tie together with string

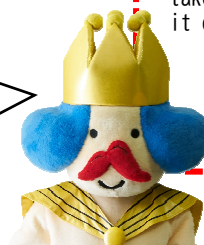
If a warning sticker is attached

If there is a warning sticker (blue or red) affixed to the garbage you put out, take it home, check the contents, and put it out again on the next collection day.



- Please put out your garbage by **8 a.m.** on the collection day.
- Please **tie up** garbage bags before putting them out.
- **Plastic bags from supermarkets or translucent bags cannot be used.**

Let's follow the rules for taking out the trash.



Contact information
Yawatahama City Hall 生活環境課(2F)
TEL 0894-22-3111